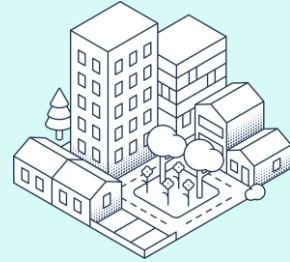
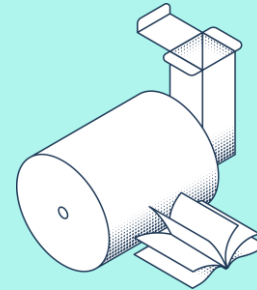
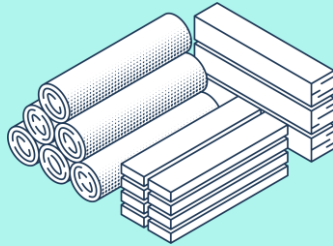


Growing a sustainable future



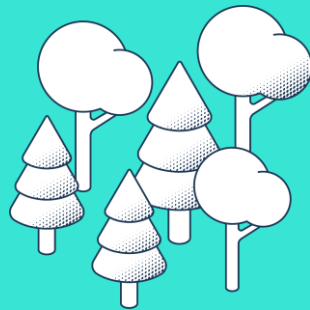


Wood products
1.5 Mm³



Packaging,
books & magazines
1.5 Mton

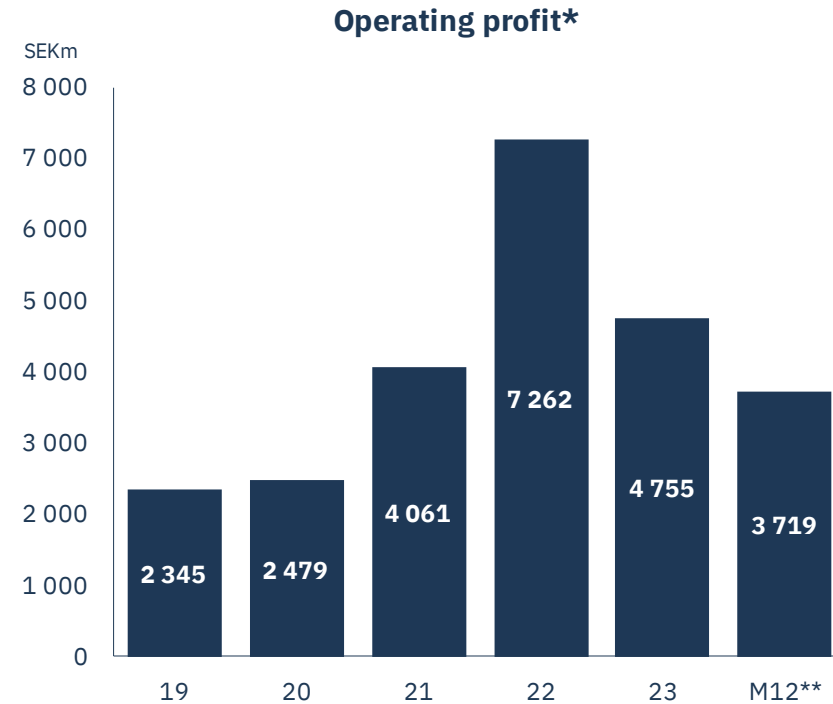
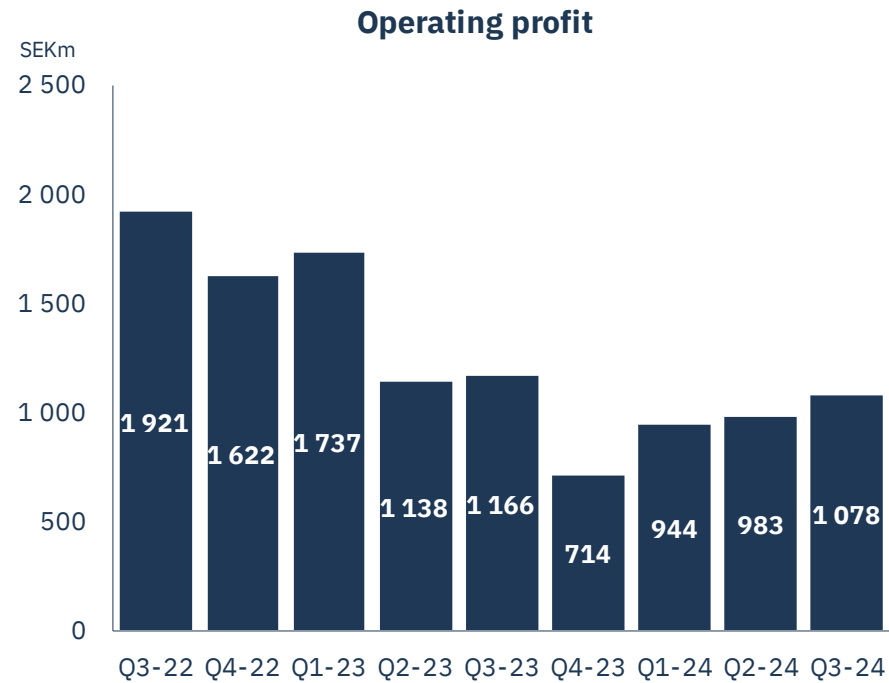
Harvest in own forests
2.8 Mm³



Hydro and wind power
1.8 TWh

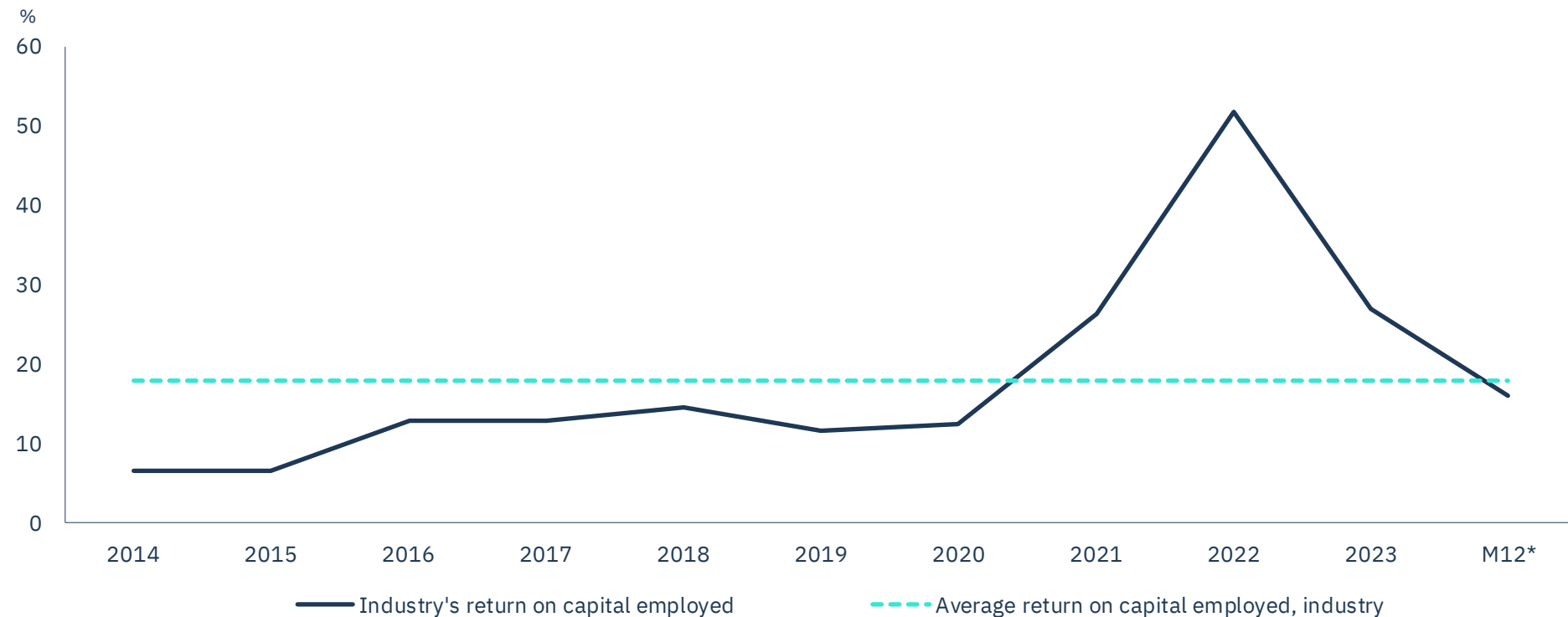
1.3 million ha total land area

Solid earnings despite slow cycle



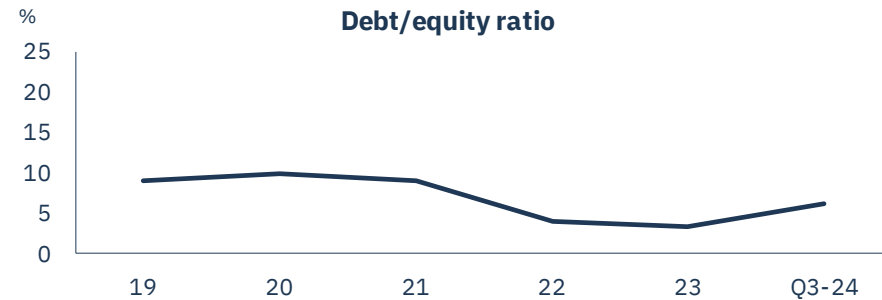
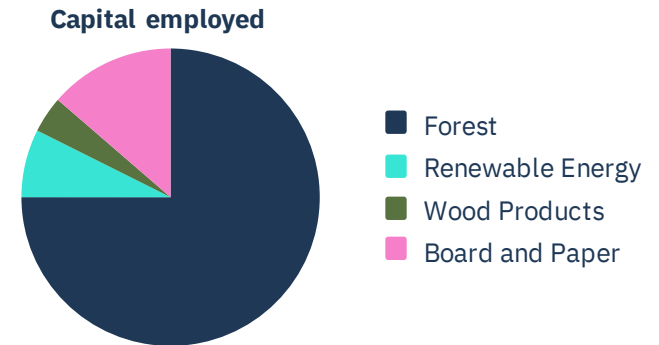
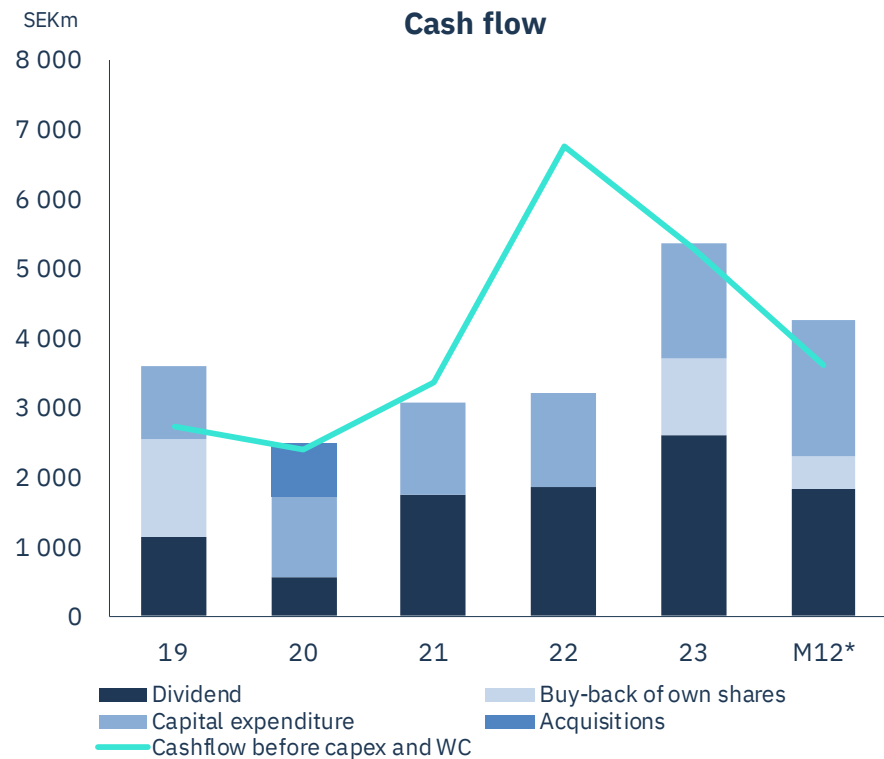
16% ROCE in our industry in the last year

18% average for the last 10 years

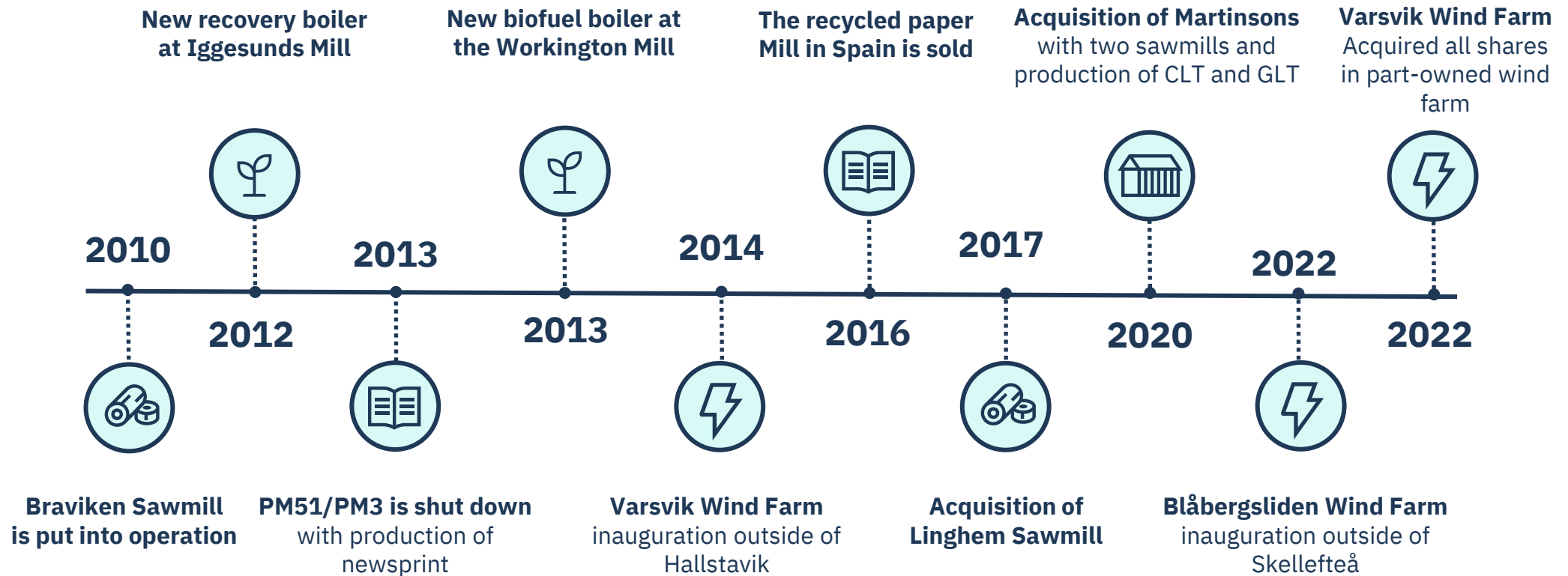


Dividends & buy-backs of SEK 6 bn 2023-2024

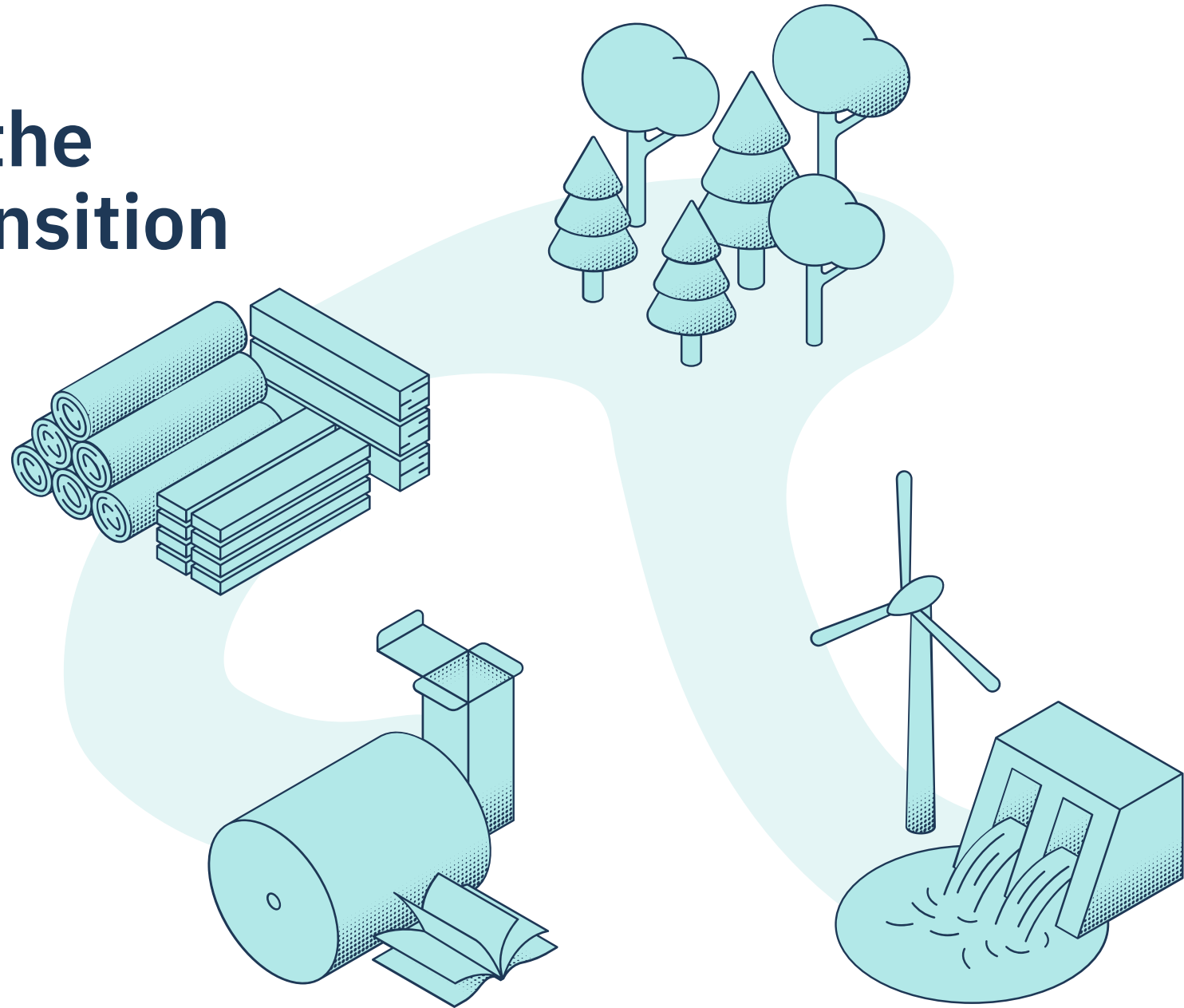
Net debt at 6% of equity



Expanding wood products and wind power

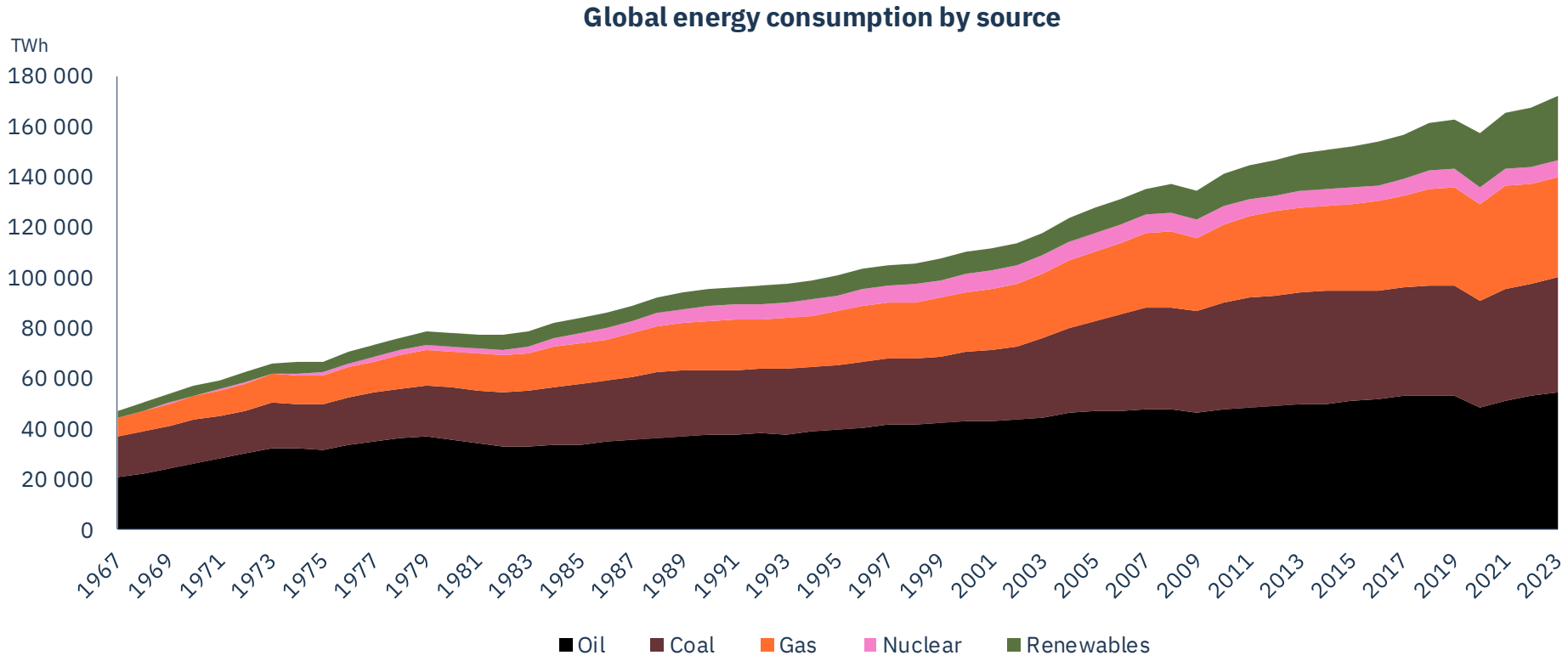


A bet on the green transition



The world is fossil fueled

Fossil energy has quadrupled last 50 years

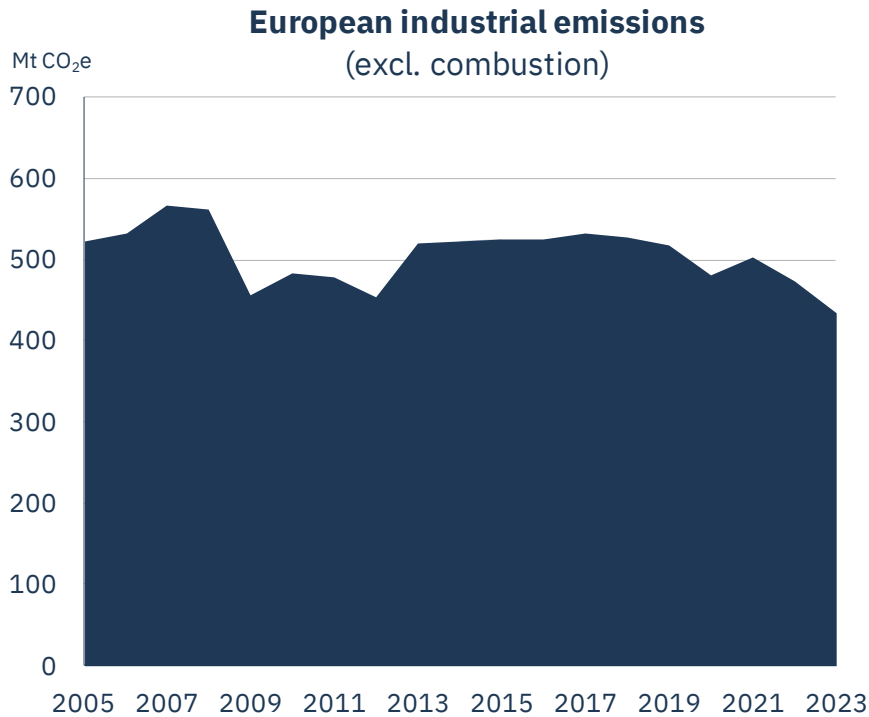


EU has high ambitions for climate & ecosystems

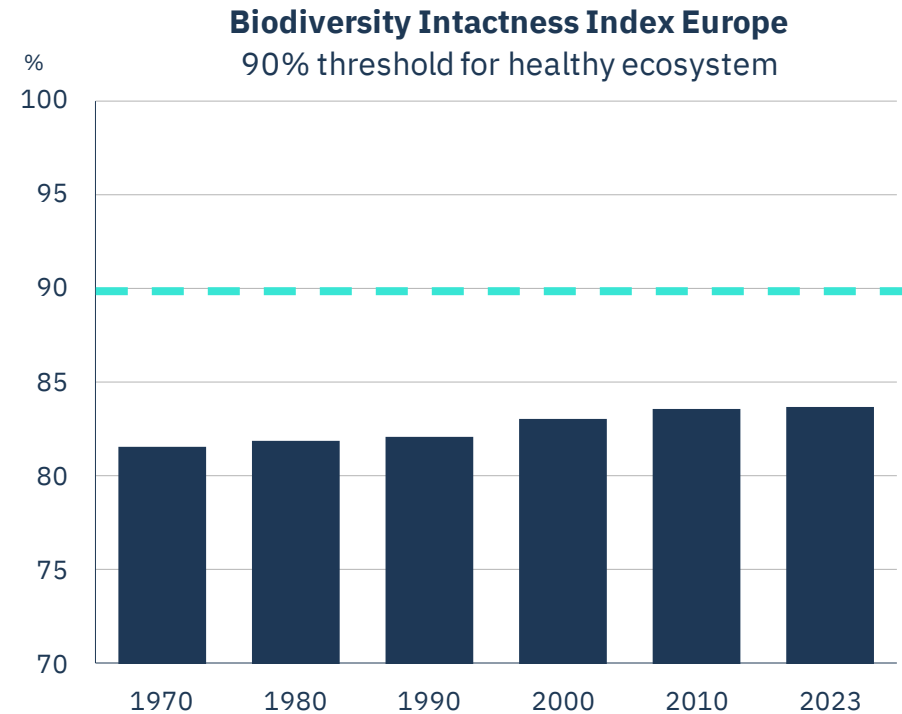


European industry has not decarbonised

Biodiversity is under pressure



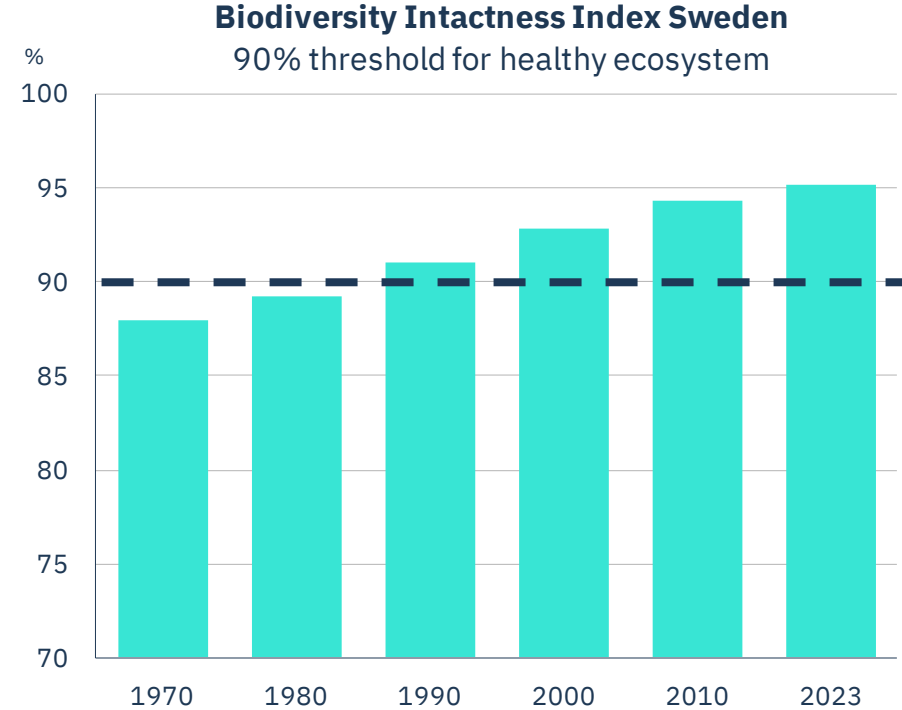
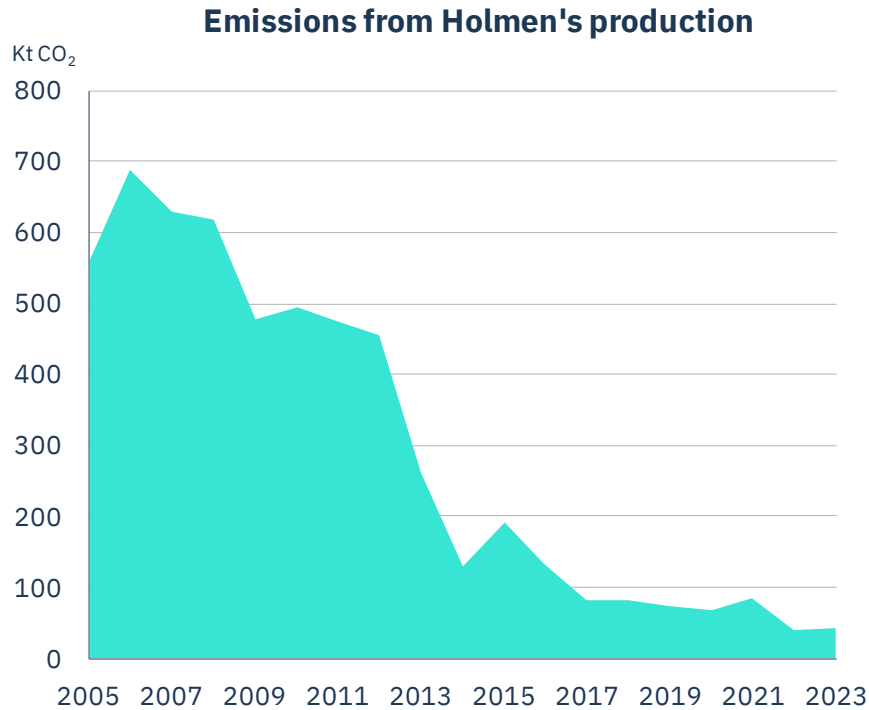
Source: European Environment Agency



Source: [Natural History Museum](#)

We have lowered our fossil emissions by 90%

Swedish ecosystems are in balance



Source: [Natural History Museum](#)

Access to wood & fossil-free energy

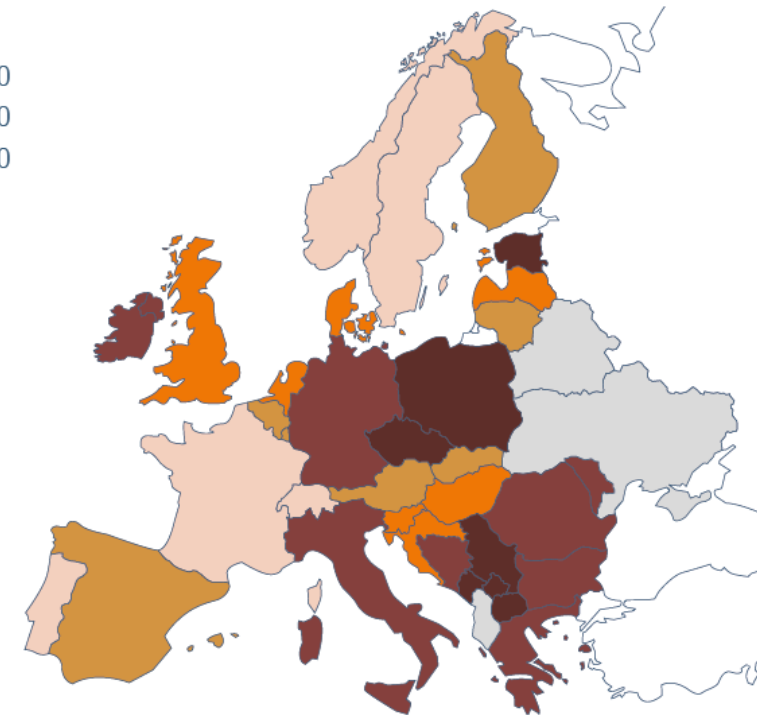
Forest assets*

- >65
- 51-65
- 31-50
- 11-30



Carbon intensity from electricity production**

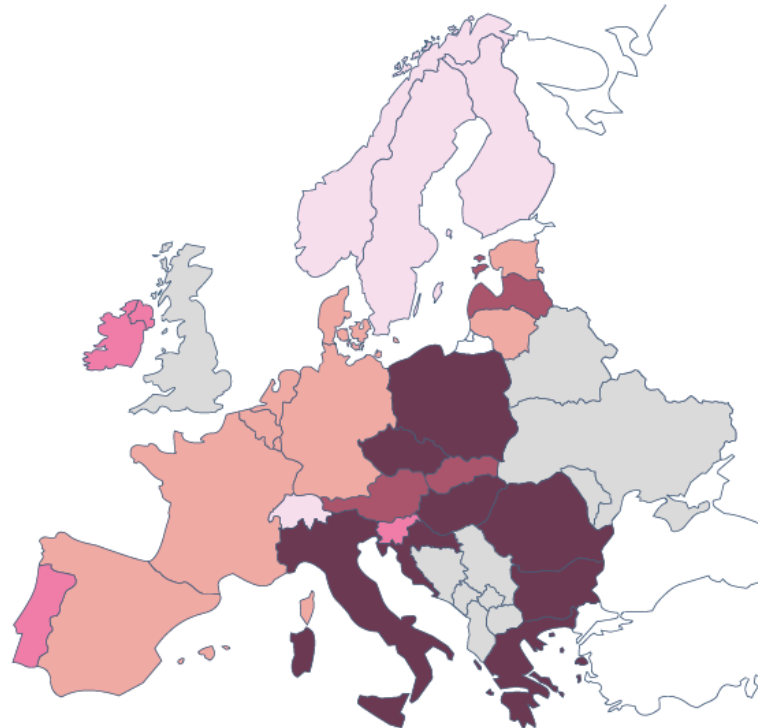
- <100
- 101-200
- 201-300
- 301-500
- >500
- No data



Clean air and plenty of water in the Nordics

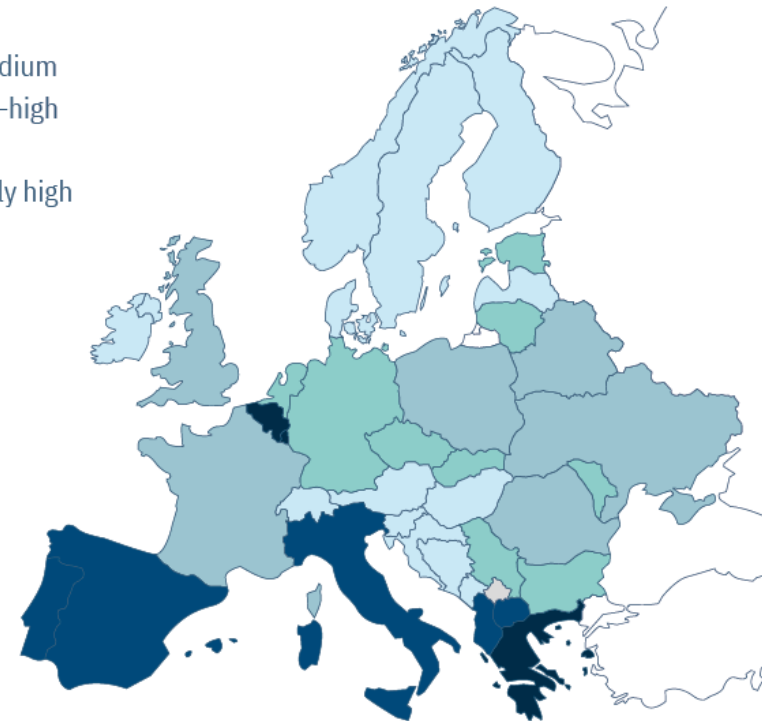
Air pollution*

- <8
- 8–9
- 10–11
- 12–14
- >14
- No data

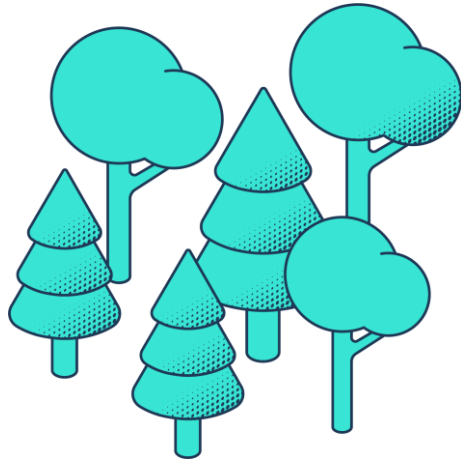


Water stress**

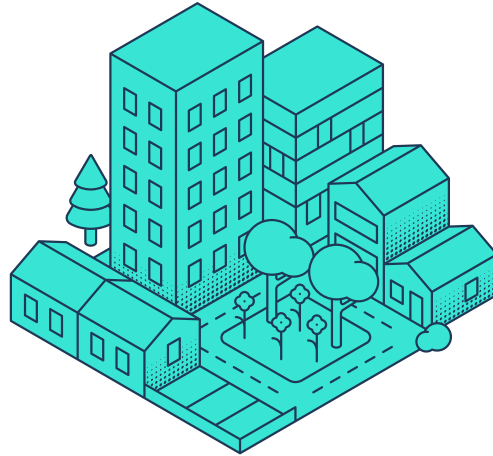
- Low
- Low–medium
- Medium–high
- High
- Extremely high
- No data



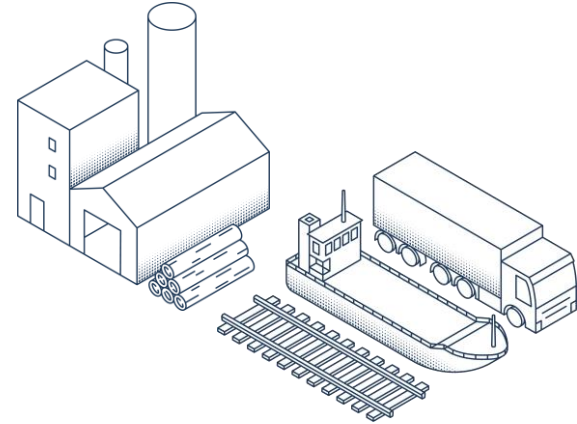
We're beyond net zero



1.6 Mt CO₂
Net increase in growing forest



0.5 Mt CO₂
Net storage in buildings



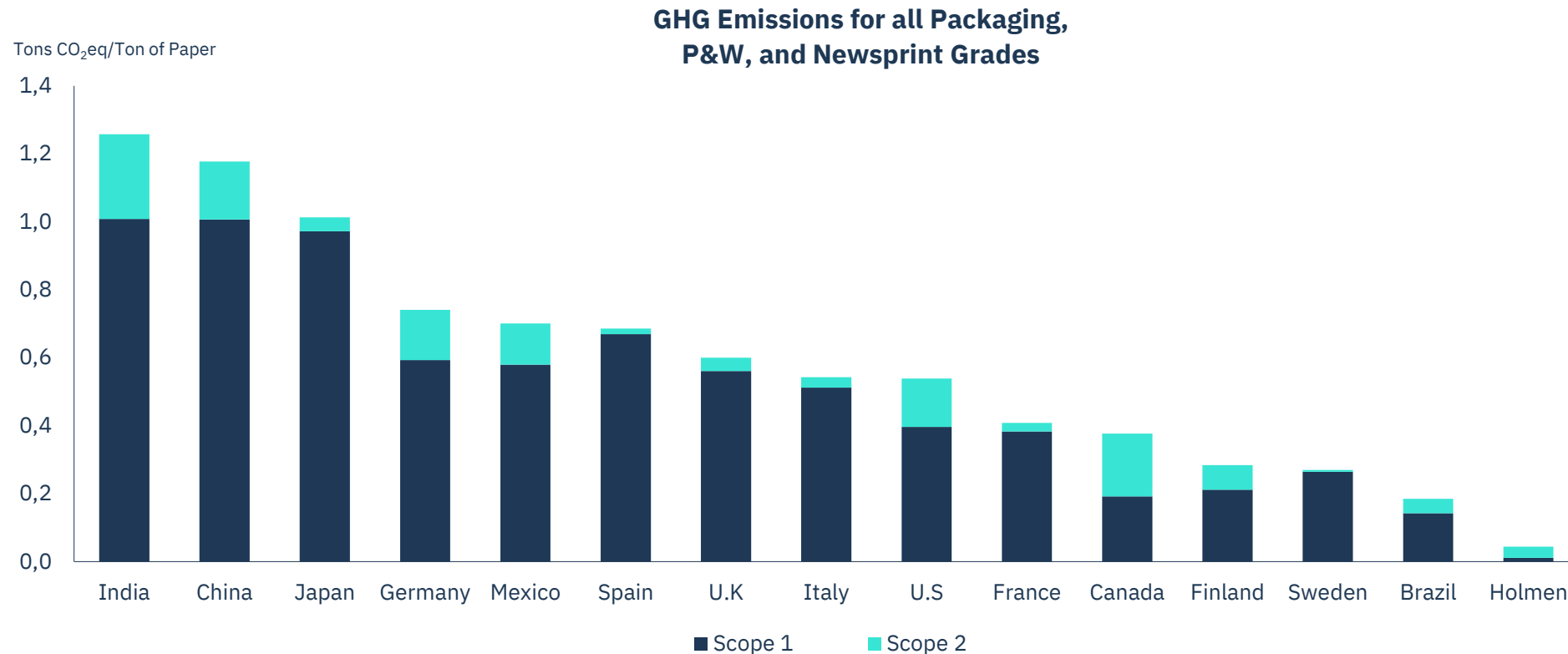
-0.1 Mt CO₂e Scope 1+2
-0.6 Mt CO₂e Scope 3

Board and Paper

1.5 million tonnes per year

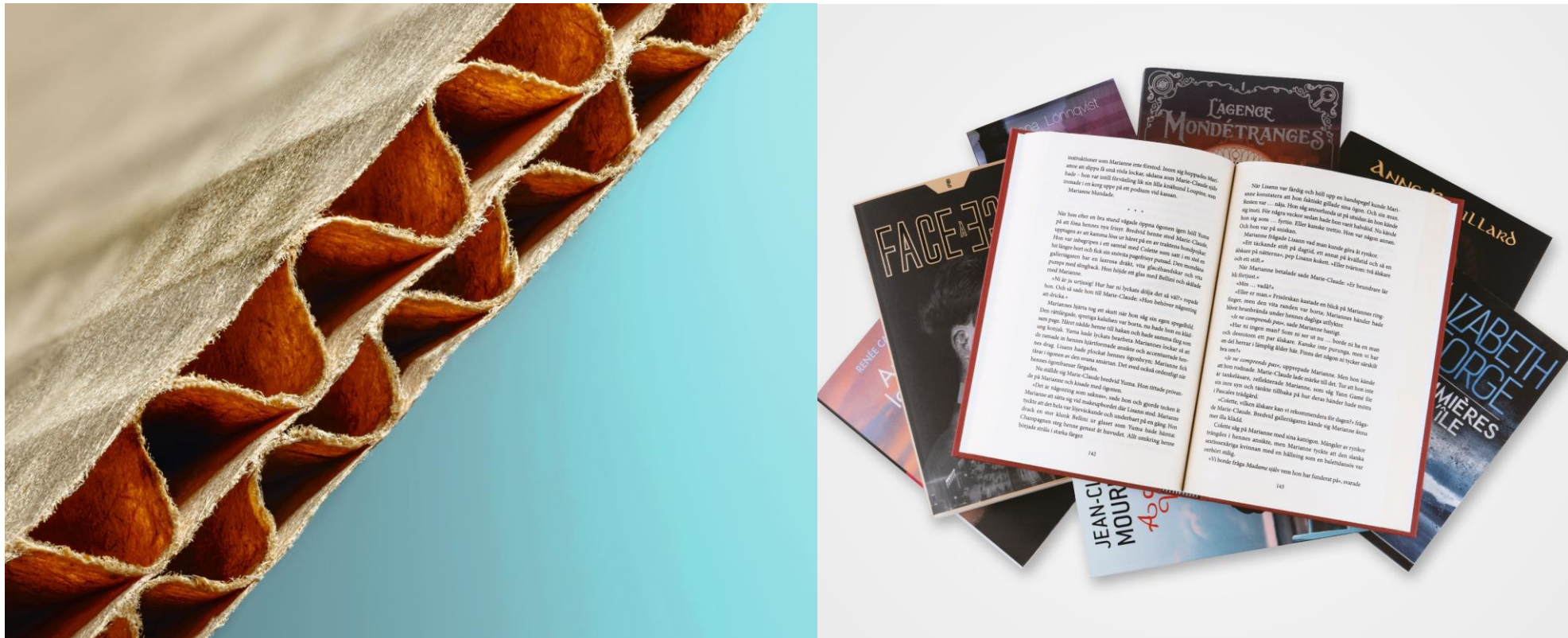
Helping our customers with their CO₂ footprint

Consumer board, transport packaging, books & magazines

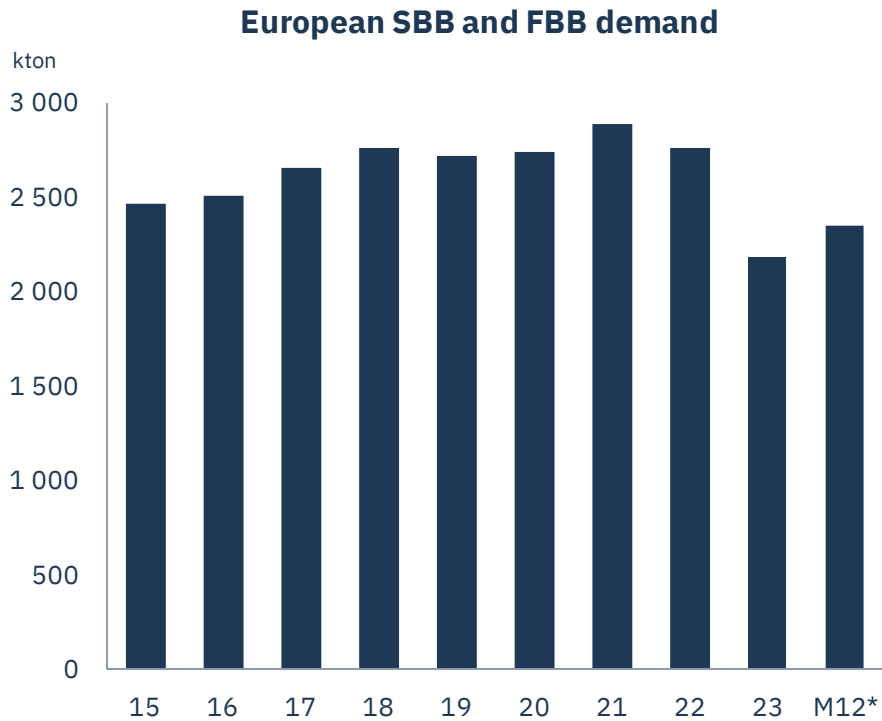


Investing to enter transport packaging

While strengthening the book offering



Muted consumer demand



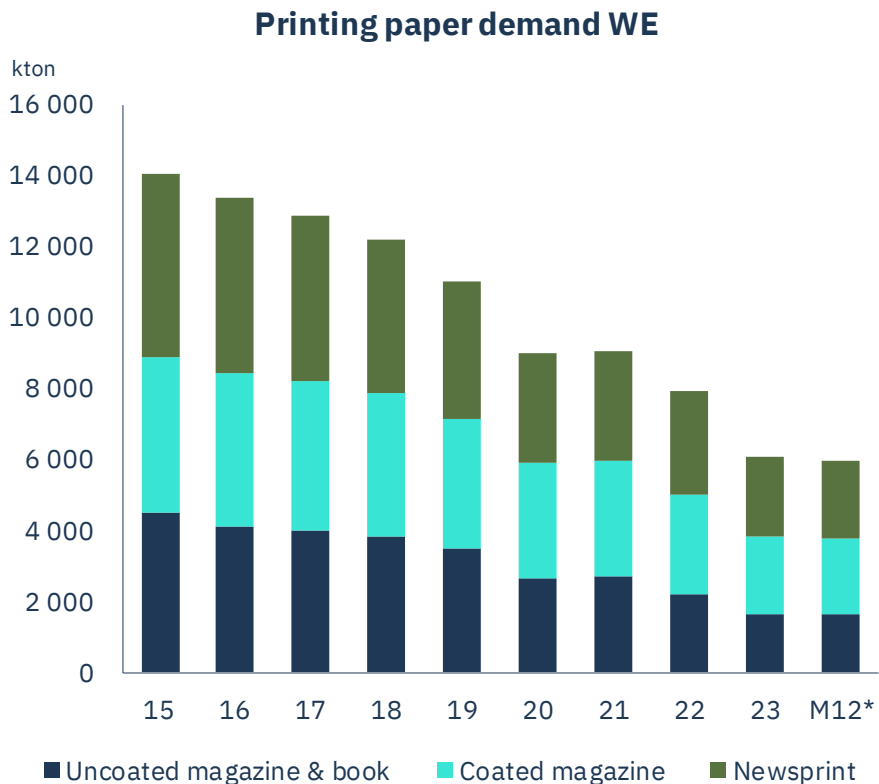
*Oct 2023 – Sep 2024

**Adjusted for rebates

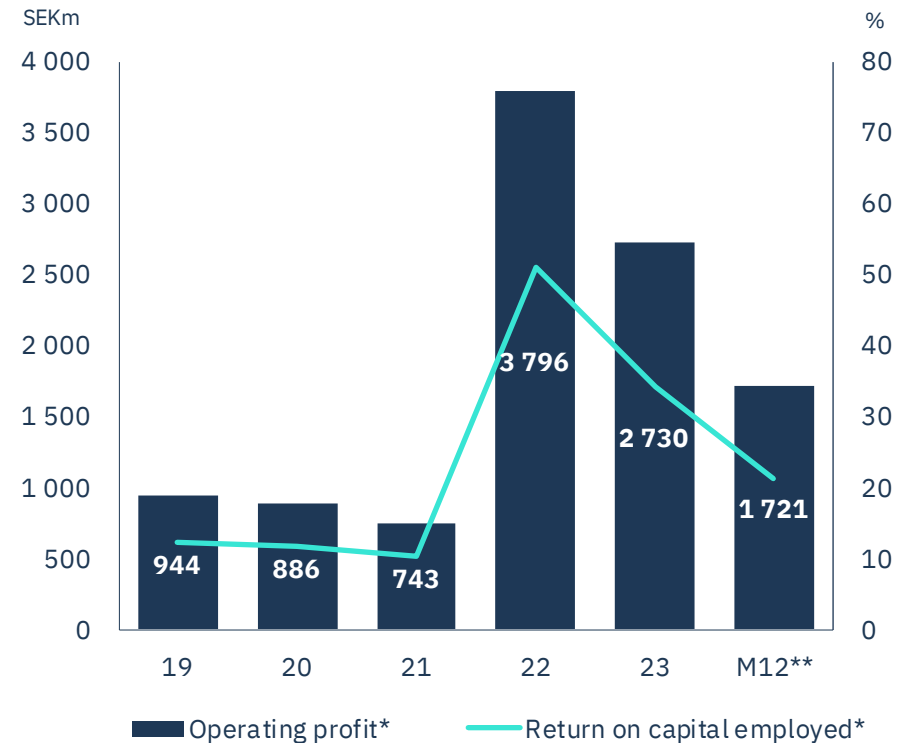
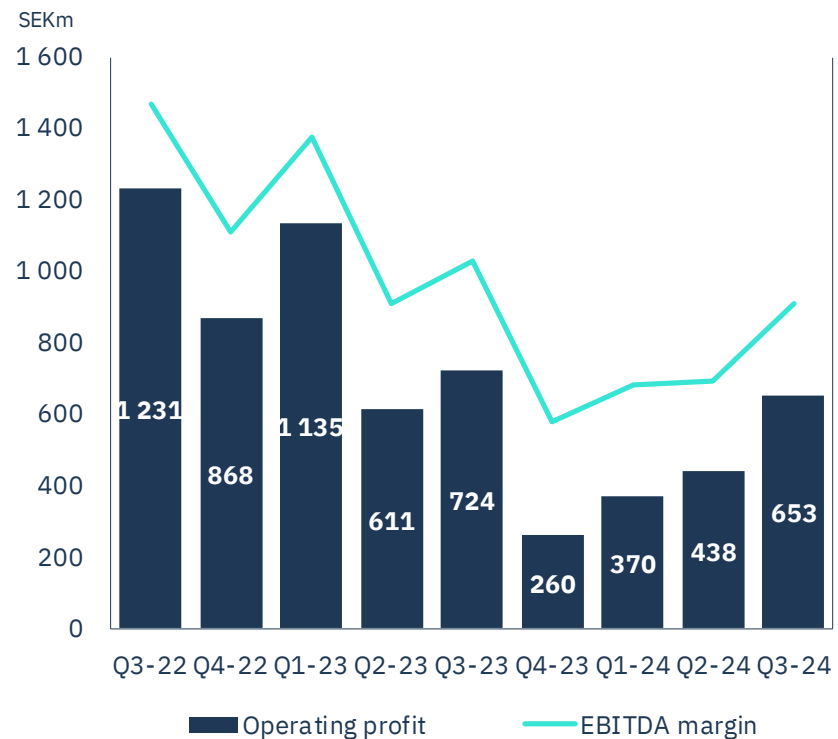
Source: CEPI and Fastmarkets RISI

Paper consumption moving sideways

Oversupplied market



Solid ROCE over time

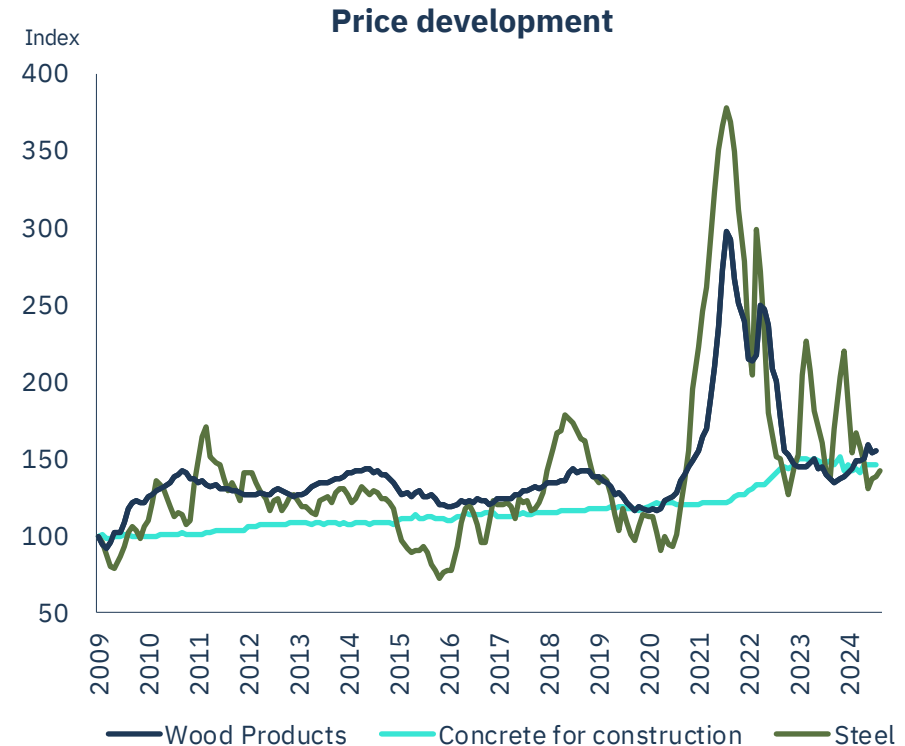
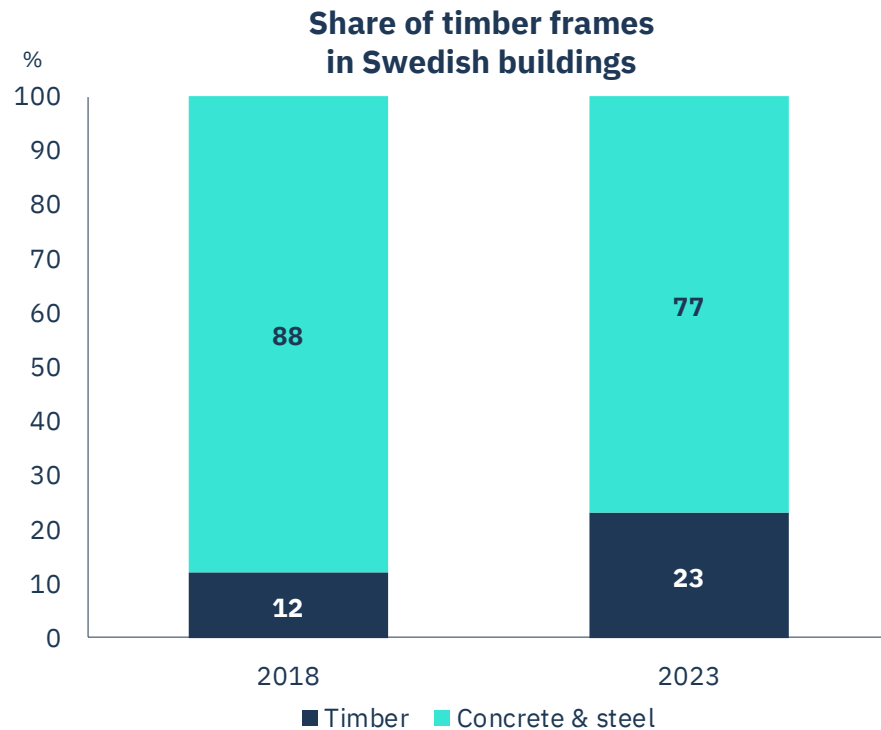


Wood Products

1.5 million m³ per year

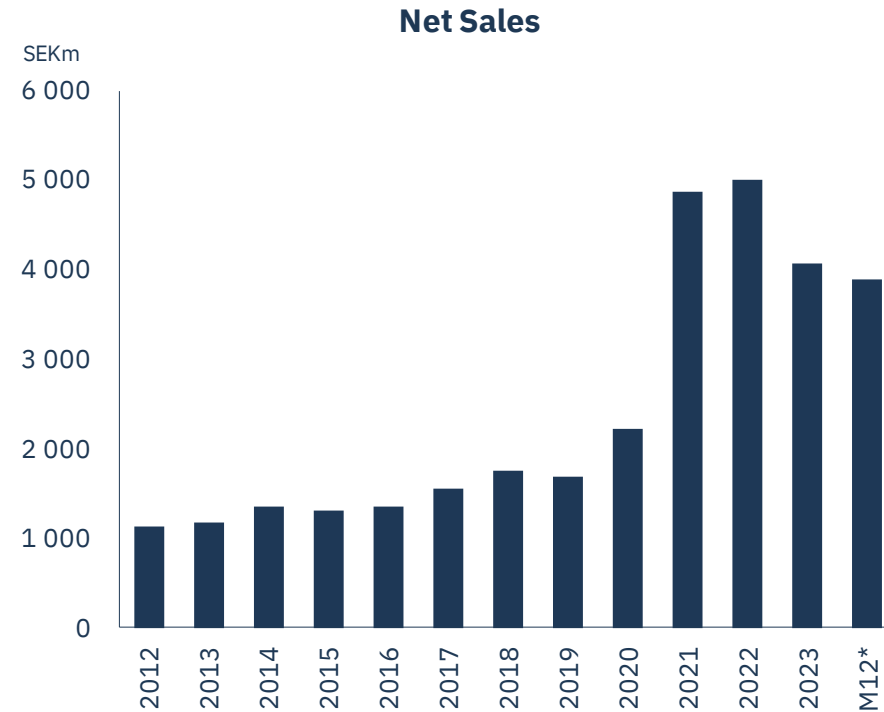
Offer a green alternative to concrete & steel

CBAM will push up the cost for building materials



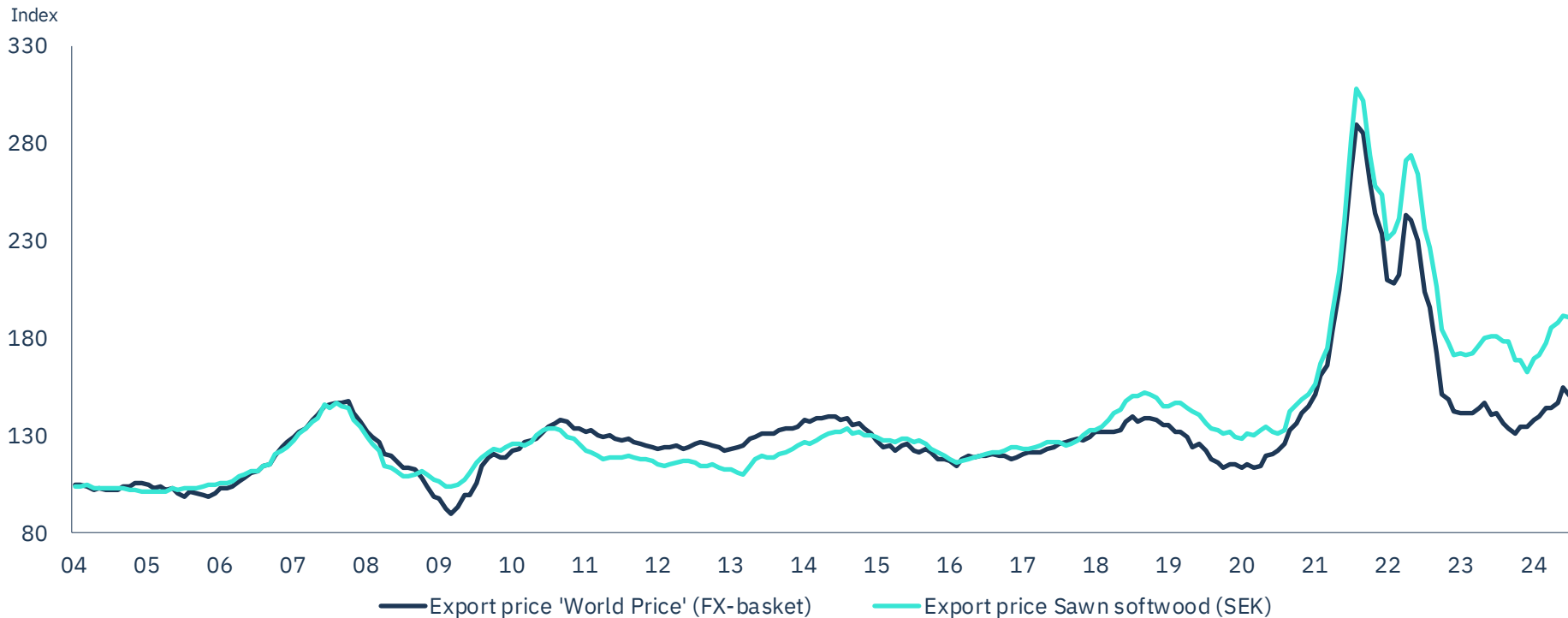
Developing our asset base with targeted Capex

- Finalising upgrade of Iggesund Sawmill
- Establishing a logistic hub at Braviken for GLT
- Ramping up CLT production after removing bottle-neck

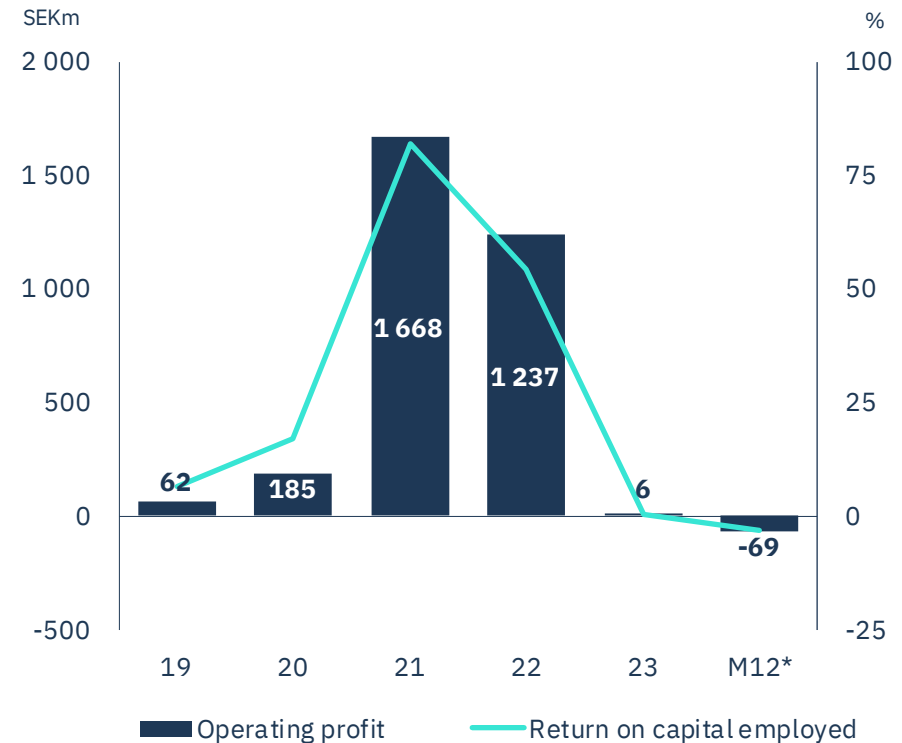
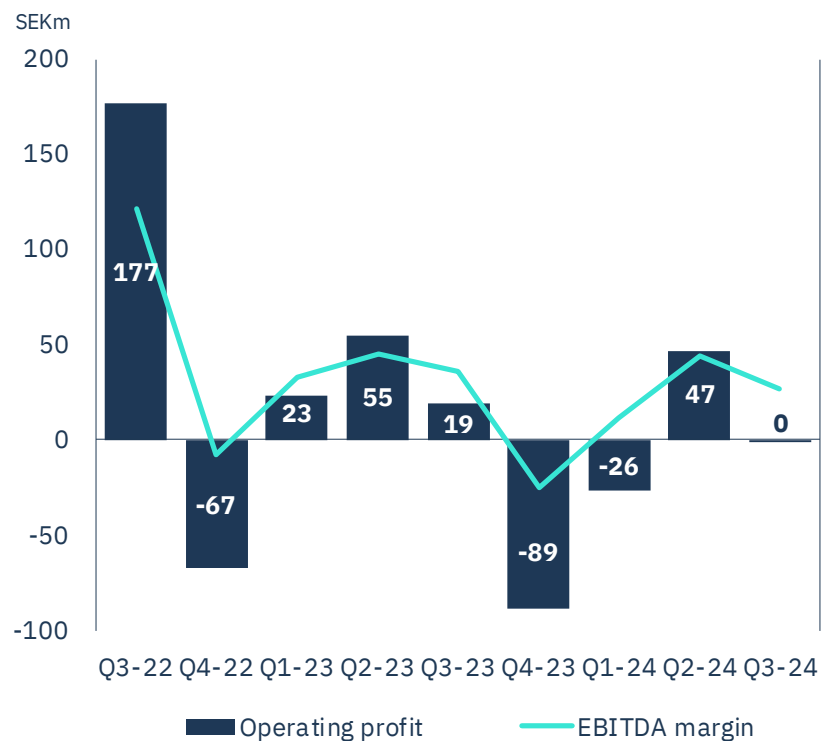


Slow constructional cycle

Prices down after seasonal up-tick in April-May



Margin under pressure from high log costs

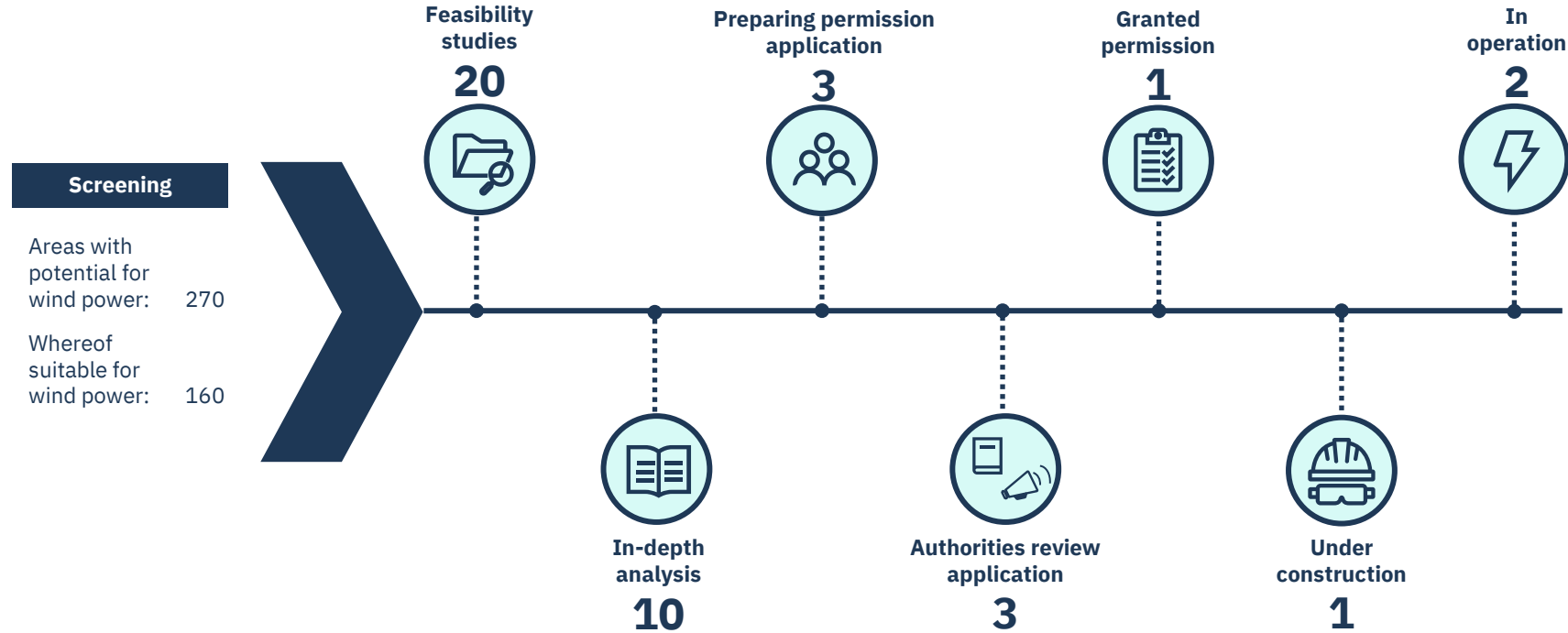


Renewable Energy

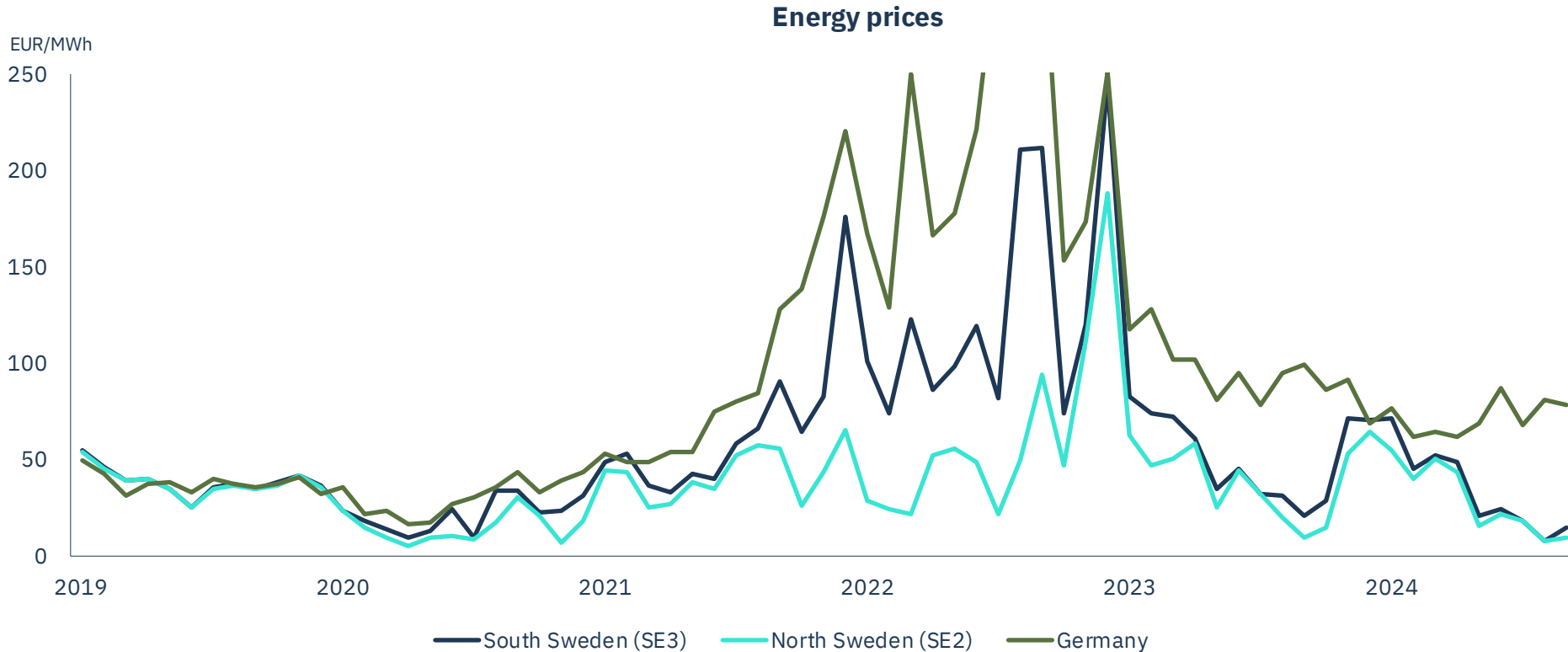
1.8 TWh per year



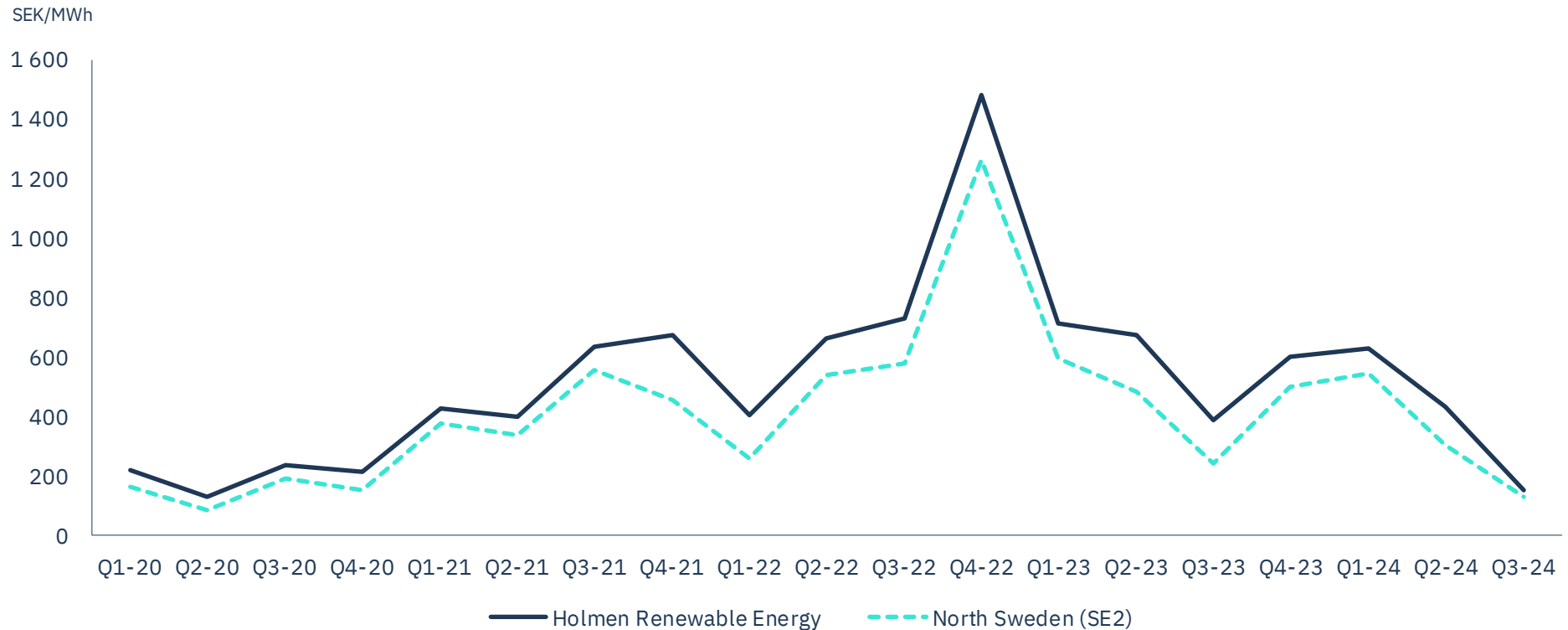
Developing a wind farm portfolio



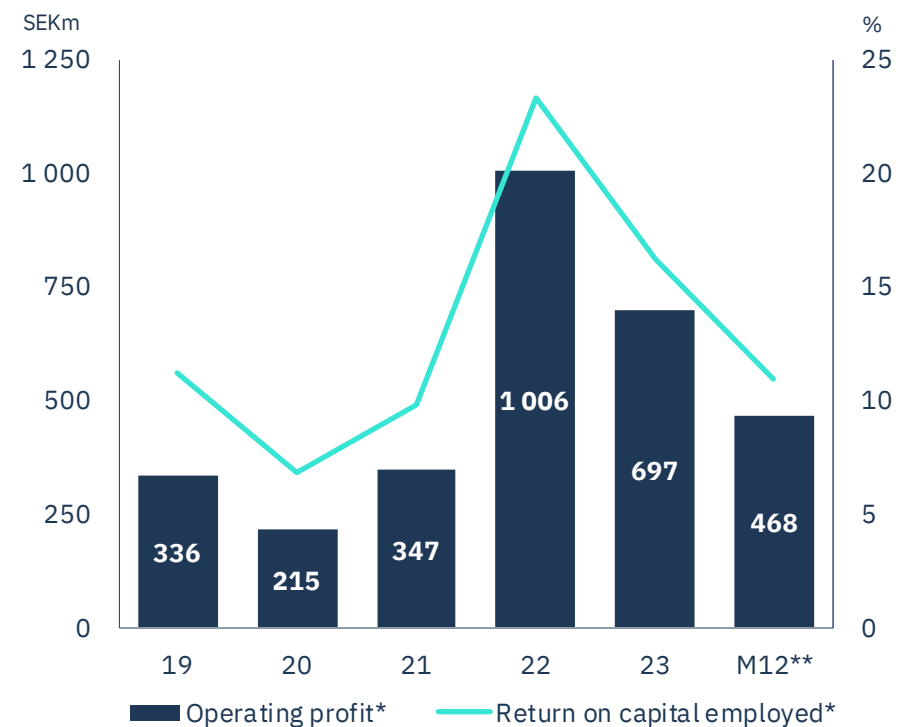
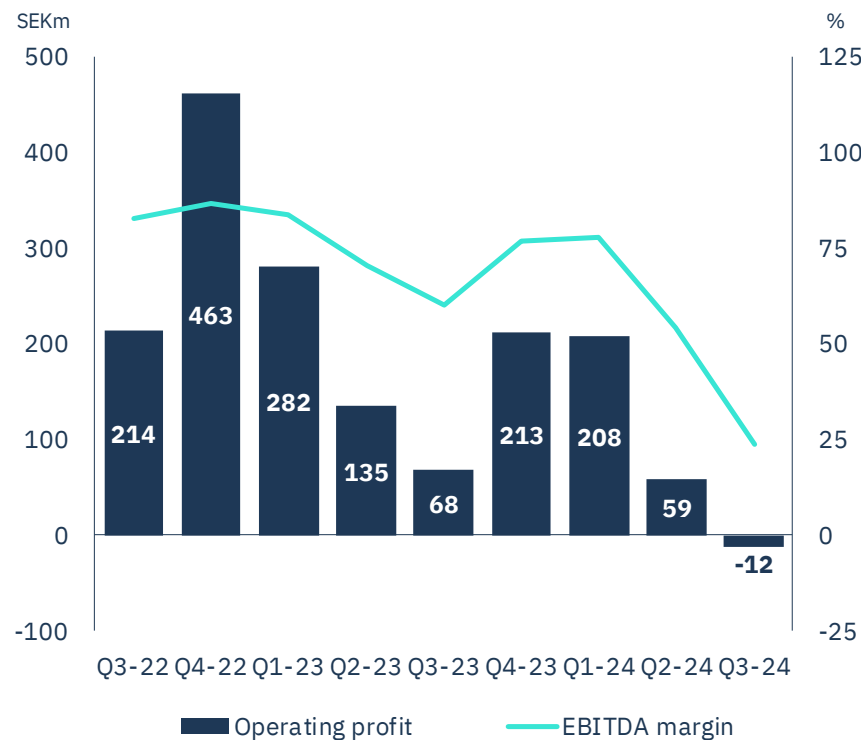
Historically low Swedish power prices in Q3



30% premium to market price over time



Price level insufficient to cover depreciation in Q3



Forest

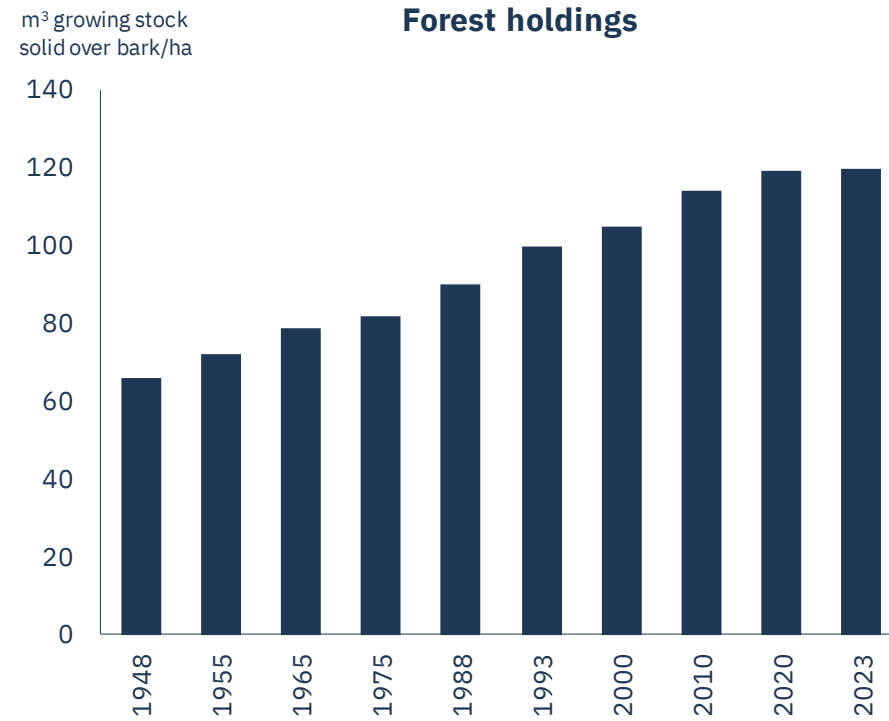
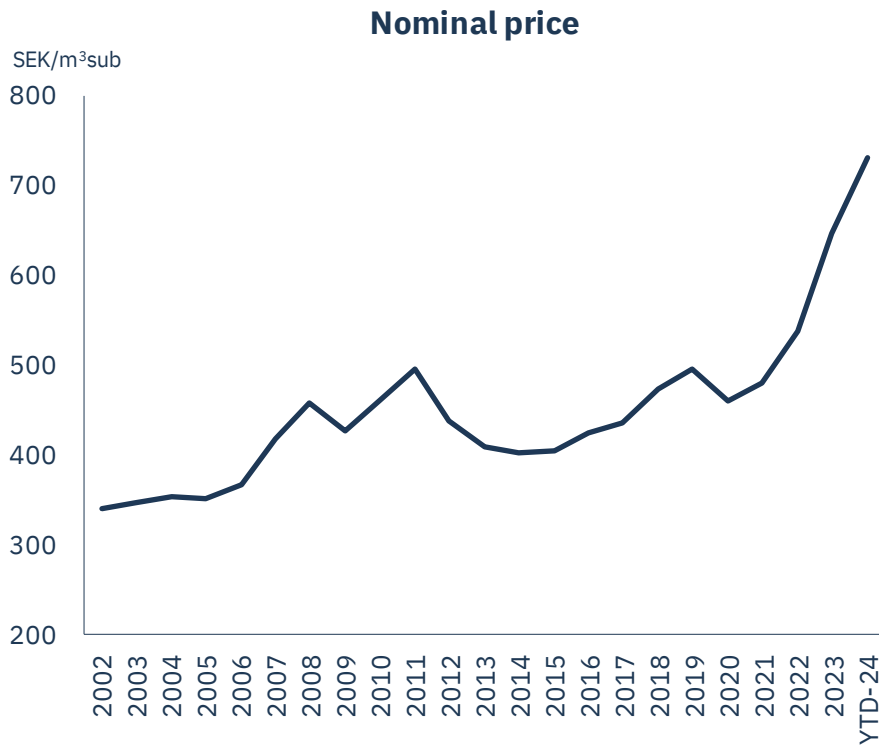
1.3 million ha total land area

1.0 million ha productive forest land

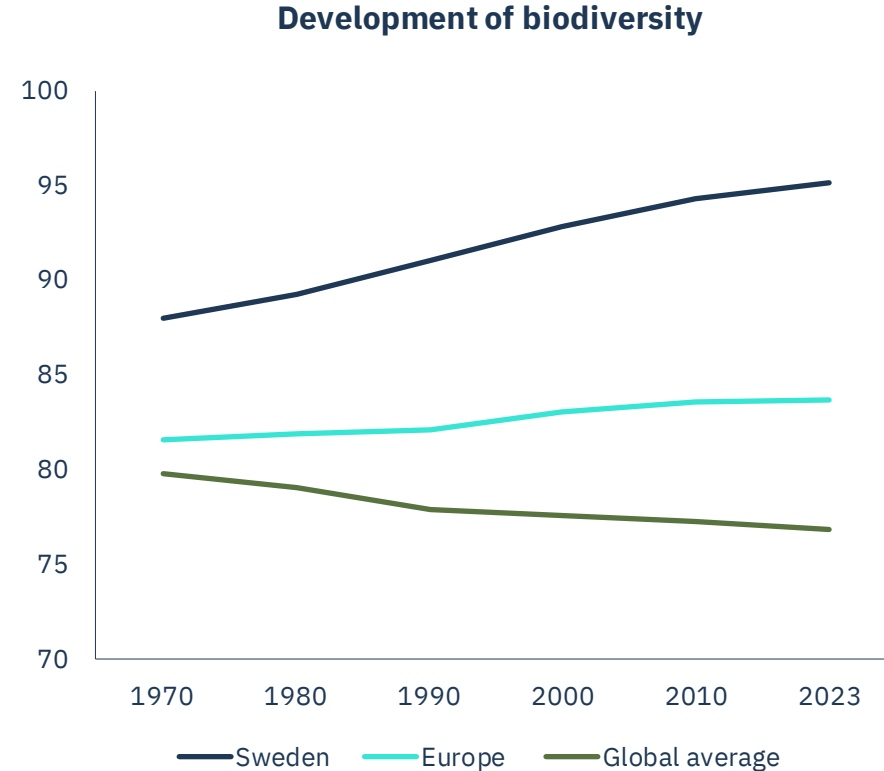
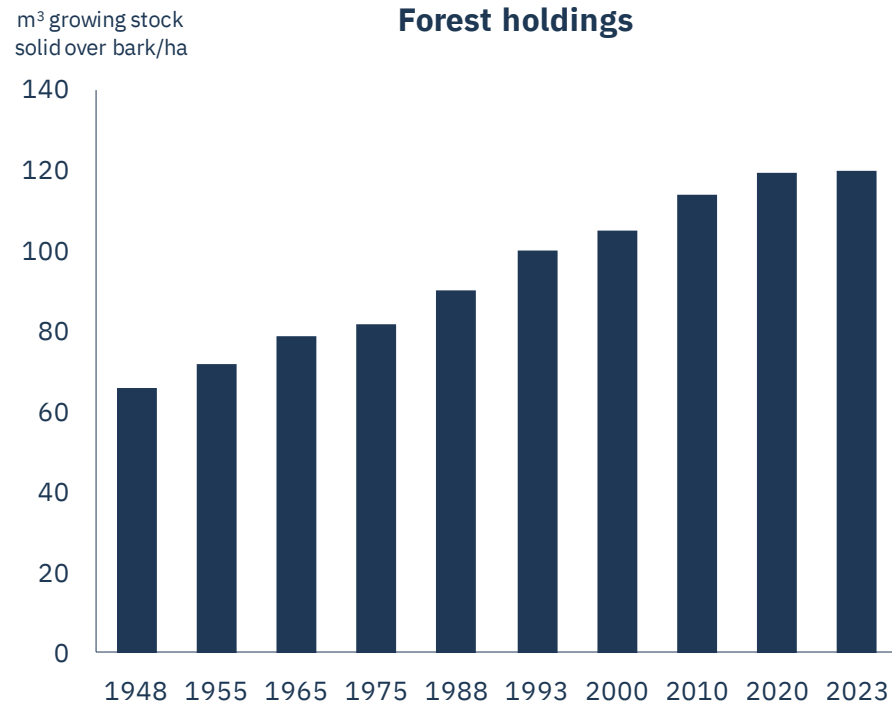


Real price increase of 1.7% p.a. last 20 years

Standing timber volume has grown by 0.6% per year

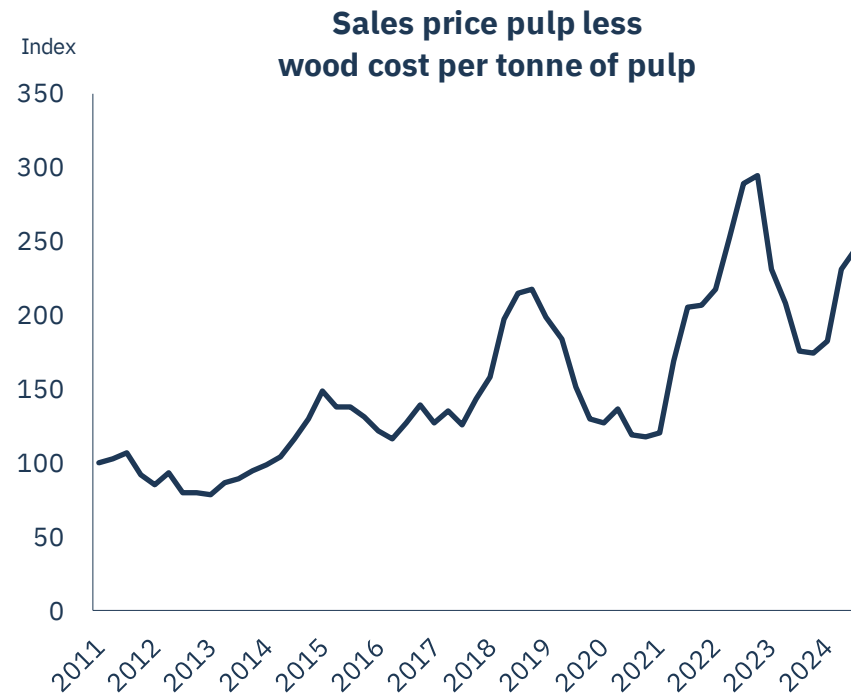
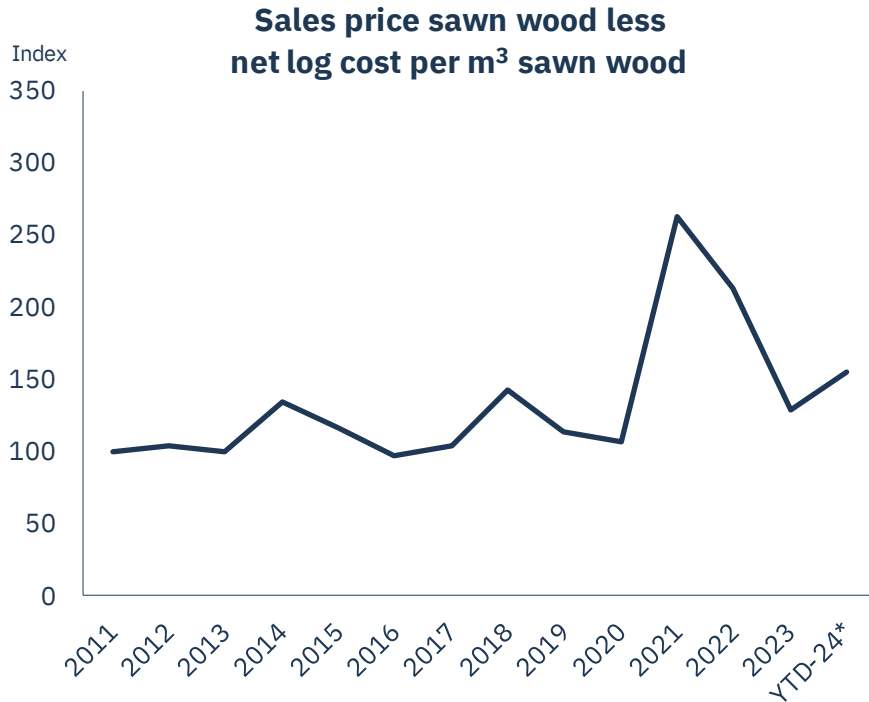


Growing forests with increased biodiversity



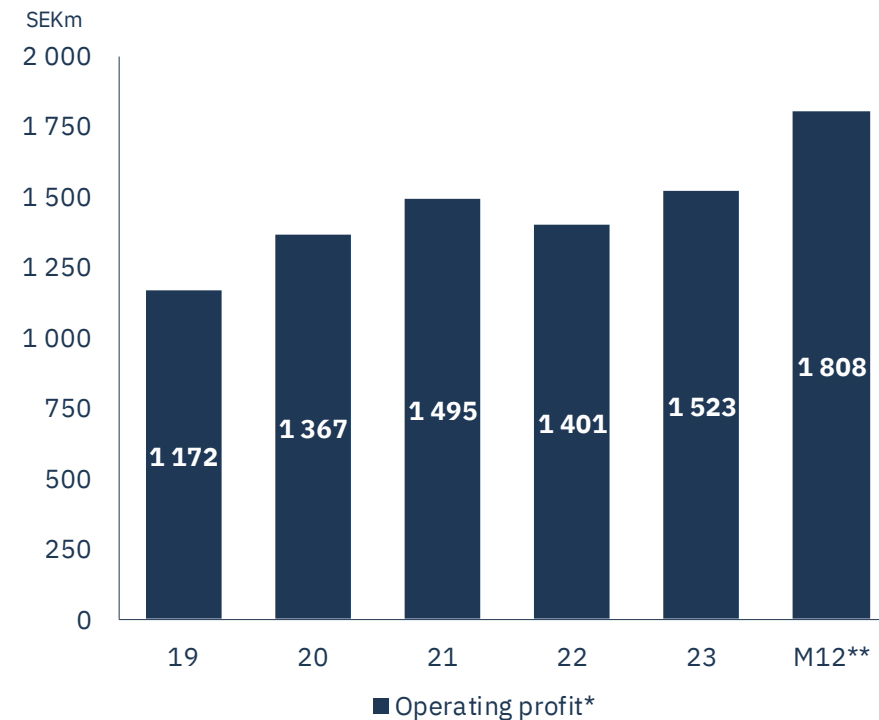
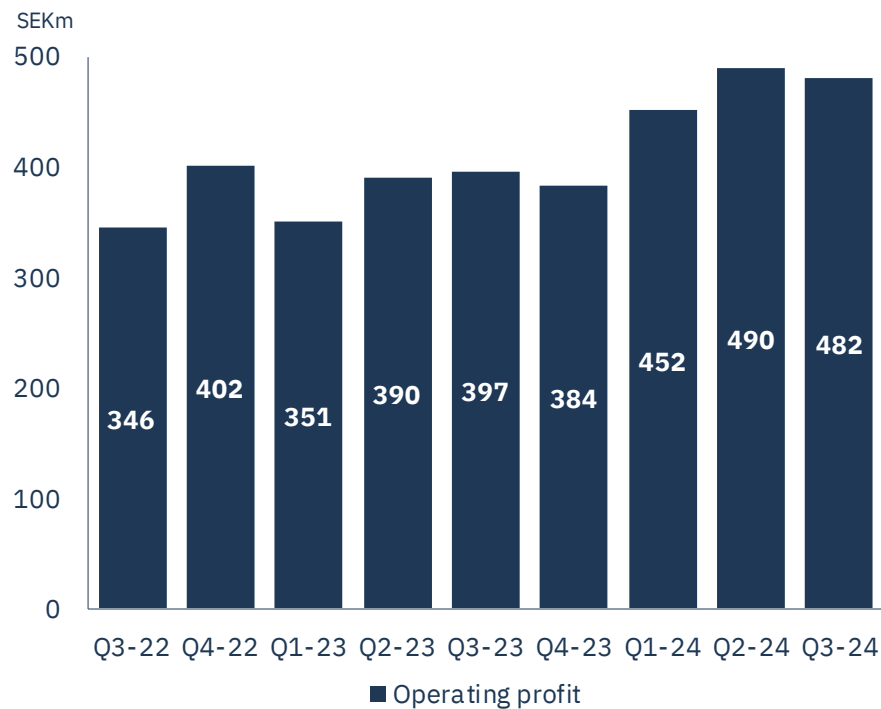
Still good mark-up on wood for pulp

Normal relationship between sawn wood & net log cost



Price increases translating into higher profits

Harvesting cash-flow has increased 60% in 3 years

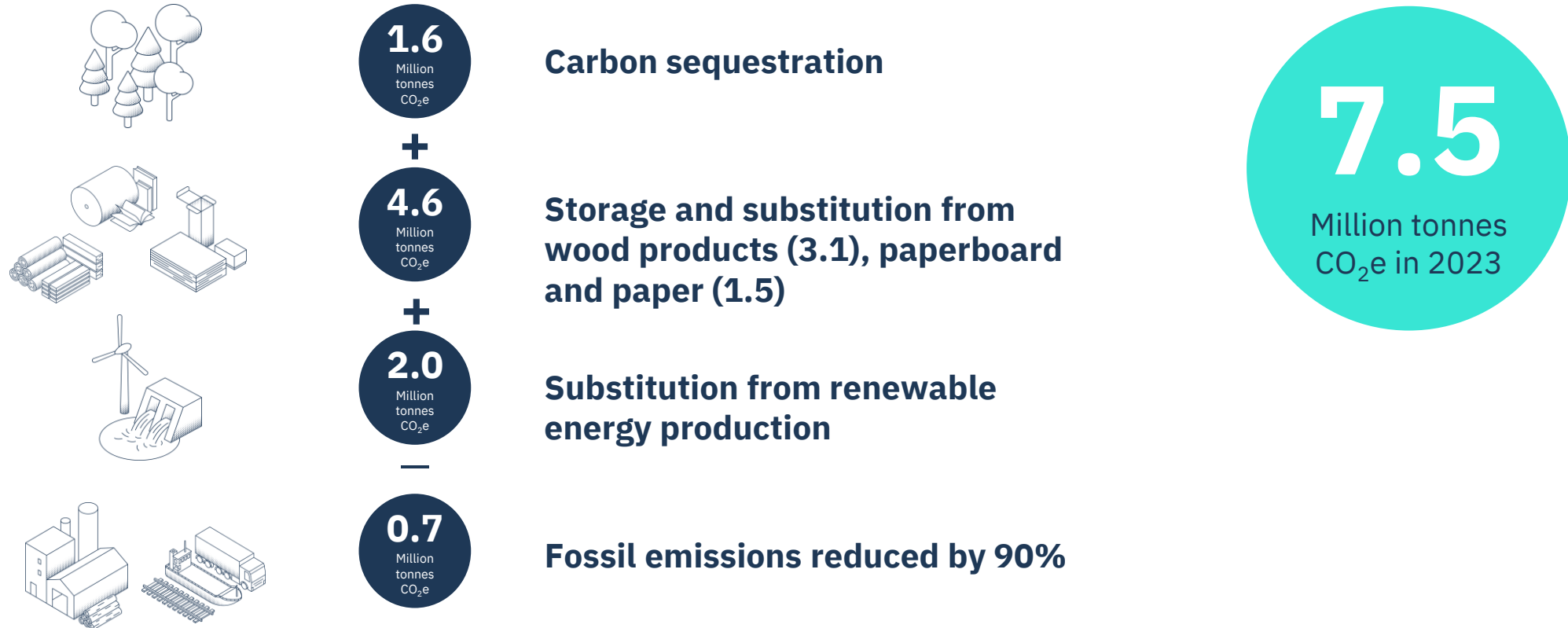


A photograph of a forest. In the foreground, a large, textured tree trunk with reddish-brown bark is prominent on the left side. The ground is covered in green moss and small plants. In the background, many other trees are visible, creating a dense forest scene. The lighting is soft, suggesting a slightly overcast day.

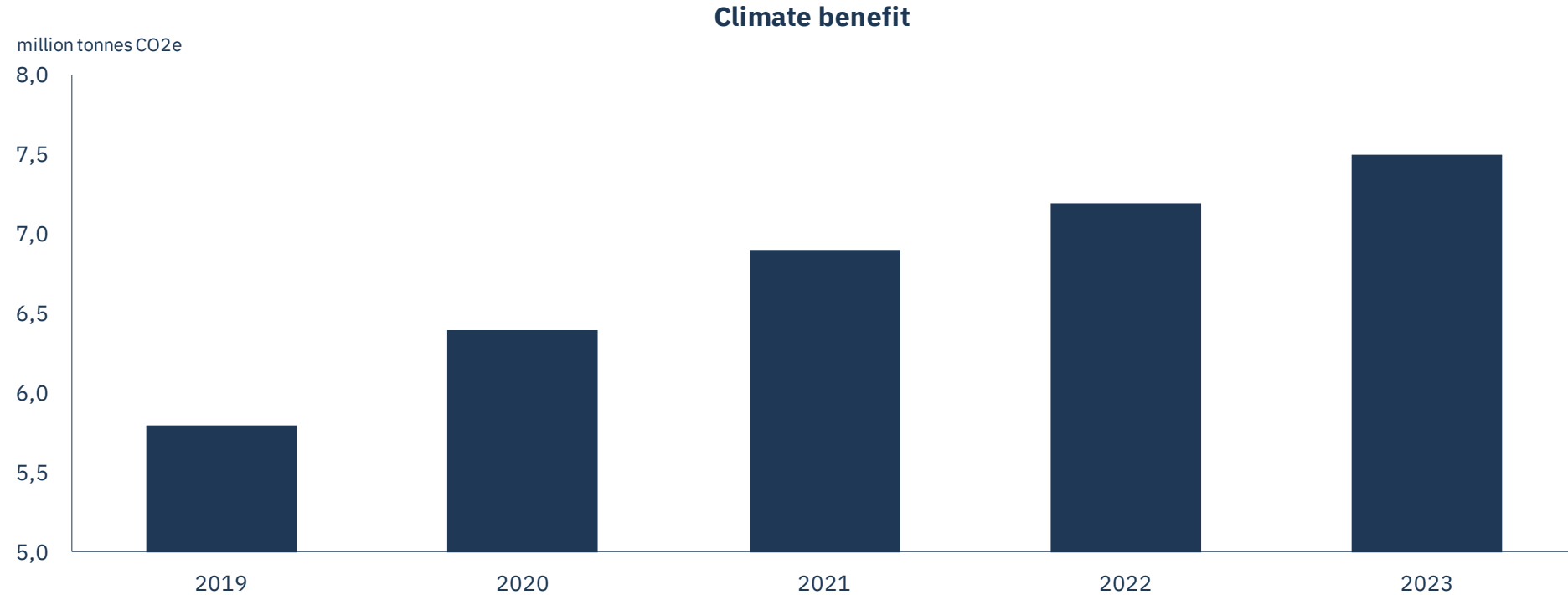
Growing a sustainable future

We grow houses

Leftovers are converted into renewable packaging and paper
We harvest the energy that blows and runs through our forests



Increasing our contribution to the climate



HOLMEN

holmen.com